

## SPECIFICATION



**LOADALL** | 530-70 / 530-110

Lift capacity: 3,000kg   Gross power: 56kW (76hp)   Lift height: 7-11m



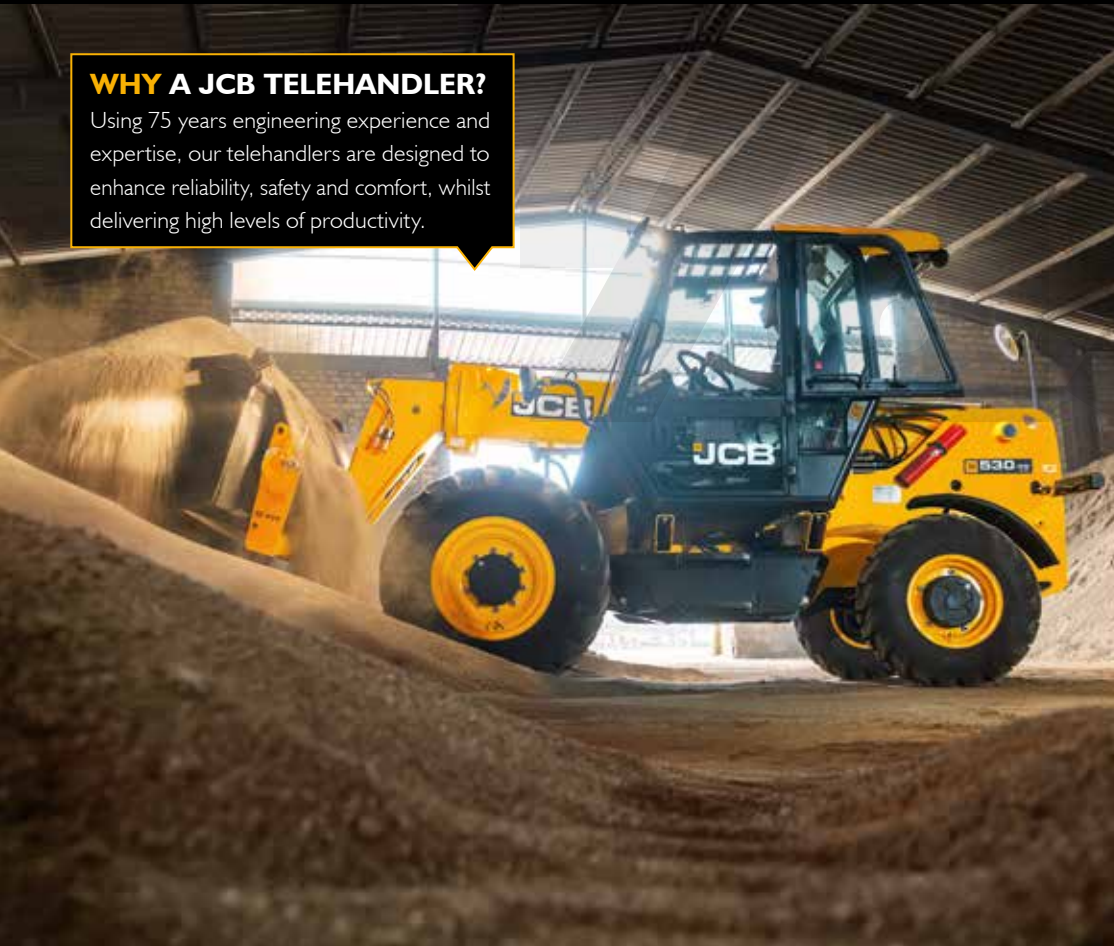


# DO MUCH MORE

JCB pioneered the telehandler concept in 1977 and constant innovation has helped us remain the world's No.1 choice. Today, the JCB Loadall range is one of the most extensive in the world, offering the versatility of 4 machines in one: crane, forklift, wheel loading shovel and access platform. The 530-70 and 530-110 Loadalls have all the power and performance you need, with a proven JCB DIESELMAX engine and lift height of 7.11m.

## WHY A JCB TELEHANDLER?

Using 75 years engineering experience and expertise, our telehandlers are designed to enhance reliability, safety and comfort, whilst delivering high levels of productivity.



## MORE RELIABILITY

Designed to JCB's global standards and built to last, the 530-70 and 530-110 are the perfect machines for tough manual handling applications and environments.

## MORE COMFORT

A clear digital display and well-designed cab ergonomics, ensure the operator is comfortable and in control at all times.



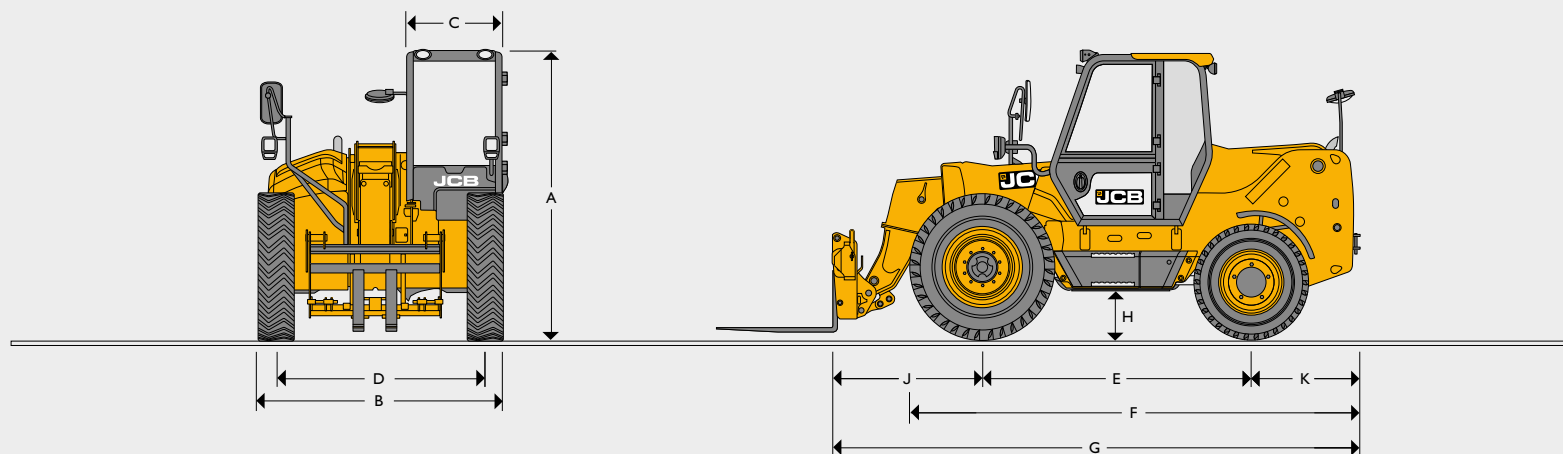
## MORE SAFETY

The JCB patented load management control system protects both the operator and the customer's investment.

## MORE CONNECTIVITY

JCB's LiveLink telematics system enables customers to monitor their machines remotely and stay informed with real-time servicing, security and operation information.

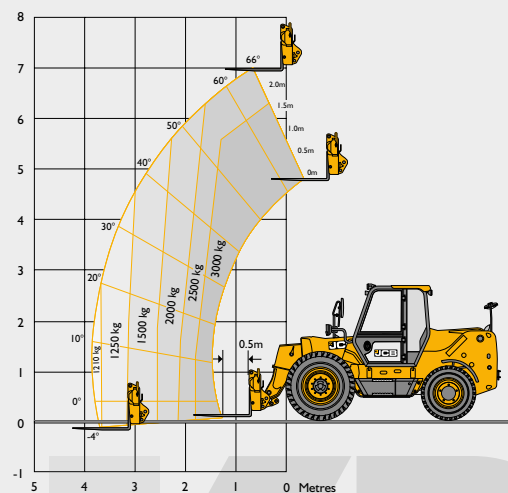
## STATIC DIMENSIONS



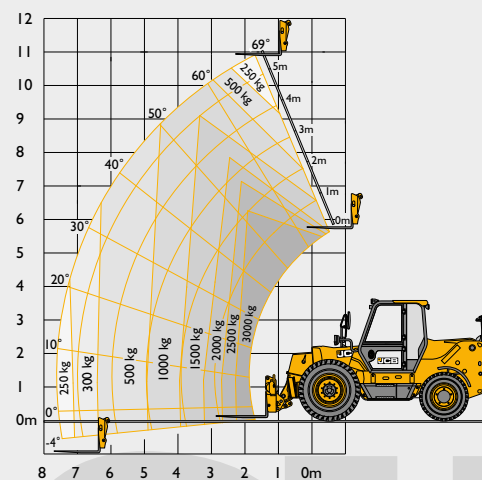
|   |                                   |    | 530-70 | 530-110 |
|---|-----------------------------------|----|--------|---------|
| A | Overall height                    | m  | 2.62   | 2.62    |
| B | Overall width (over tyres)*       | m  | 2.36   | 2.36    |
| C | Inside width of cab               | m  | 0.79   | 0.79    |
| D | Front track                       | m  | 1.99   | 1.99    |
| E | Wheelbase                         | m  | 2.54   | 2.54    |
| F | Overall length to front tyres     | m  | 4.13   | 4.13    |
| G | Overall length to front carriage  | m  | 4.92   | 5.43    |
| H | Ground clearance                  | m  | 0.39   | 0.39    |
| J | Front wheel centre to carriage    | m  | 1.42   | 1.93    |
| K | Rear wheel centre to rear face    | m  | 0.95   | 0.95    |
|   | Outside turn radius (over tyres)  | m  | 4.85   | 4.85    |
|   | Operating weight (with GP shovel) | kg | 7825   | 9805    |
|   | Operating weight (with forks)     | kg | 7510   | 9490    |

\*Type dependent

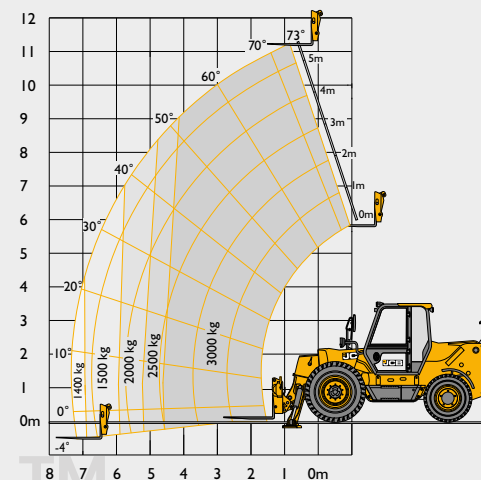
## LIFT PERFORMANCE



530-70



530-110 (stabilisers retracted)



530-110 (stabilisers extended)

|                                         |         | 530-70 | 530-110 (stabilisers retracted) | 530-110 (stabilisers extended) |
|-----------------------------------------|---------|--------|---------------------------------|--------------------------------|
| Maximum lift capacity                   | kg      | 3000   | 3000                            | 3000                           |
| Lift capacity to full height            | kg      | 2500   | 250                             | 3000                           |
| Lift capacity at full reach             | kg      | 1250   | 250                             | 1400                           |
| Lift height                             | m       | 7.0    | 10.73                           | 11.0                           |
| Reach at maximum lift height            | m       | 1.0    | 1.5                             | 0.9                            |
| Maximum forward reach                   | m       | 3.83   | 7.52                            | 7.46                           |
| Reach with 1 tonne load                 | m       | 3.83   | 4.91                            | 7.46                           |
| Maximum placing height                  | m       | 6.3    | 10.25                           | 10.5                           |
| Maximum dump height                     | m       | 5.8    | 9.75                            | 10                             |
| Shovel roll-back angle (at full height) | degrees | 37     | 20                              | 19.5                           |
| Shovel dump angle (at full height)      | degrees | 44     | 12                              | 11.5                           |

| ENGINE                                                                                                           |                     |            |
|------------------------------------------------------------------------------------------------------------------|---------------------|------------|
| Manufacturer                                                                                                     | JCB DIESELMAX 448   |            |
| Displacement                                                                                                     | litres              | 4.8        |
| No of cylinders                                                                                                  | 4                   |            |
| Aspiration                                                                                                       | Naturally aspirated |            |
| Gross power @ 2200rpm                                                                                            | kW (hp)             | 56 (76)    |
| Max. torque @ 1100rpm                                                                                            | Nm (kgm)            | 310 (31.6) |
| Reversible cooling fan (1 cycle at 20 mins interval). Pre-cleaner (Turbo III). Spark arrestor in exhaust system. |                     |            |

| TRANSMISSION      |                                                                                    |    |
|-------------------|------------------------------------------------------------------------------------|----|
| Type              | JCB Synchro Shuttle with torque converter                                          |    |
| Gears             | 4 forward, 4 reverse                                                               |    |
| Max speed         | kph                                                                                | 30 |
| Control           | Electronic shuttle<br>Transmission disconnect button<br>2/4 wheel drive disconnect |    |
| Front & rear axle | JCB Max Track torque proportioning differential                                    |    |

| ELECTRICAL SYSTEM |          |     |
|-------------------|----------|-----|
| System            | Volt     | 12  |
| Alternator output | Amp hour | 130 |

| SERVICE CAPACITIES    |        |      |
|-----------------------|--------|------|
| Fuel tank             | litres | 110  |
| Hydraulic tank        | litres | 120  |
| Engine oil            | litres | 14.2 |
| Transmission oil      | litres | 18   |
| Front axle oil        | litres | 21   |
| Rear axle oil         | litres | 11   |
| Engine coolant        |        |      |
| Brazil export variant | litres | 26   |
| SEA export variant    | litres | 22   |

| STEERING                                                              |  |
|-----------------------------------------------------------------------|--|
| Front axle: Rigid                                                     |  |
| Rear axle: Rear wheel hydrostatic power steering with manual override |  |

| BRAKES                                                                                                            |  |
|-------------------------------------------------------------------------------------------------------------------|--|
| Service brakes: Hydraulically actuated, self adjusting, in-board, oil-immersed, multi-disc type in the front axle |  |
| Parking brake: Hand operated disc brake, gearbox output                                                           |  |

| WHEELS                                                                       |  |
|------------------------------------------------------------------------------|--|
| Front: BKT 14 x 25 Industrial pattern loader grip, 20PR ply rating, tubeless |  |
| Rear: BKT 10x20 Industrial pattern, 18PR ply rating, tubeless                |  |

| HYDRAULICS                                         |                                    |                     |
|----------------------------------------------------|------------------------------------|---------------------|
|                                                    | 530-70                             | 530-110             |
| Operating system pressure                          | bar                                | 245                 |
| Single boom hydraulic auxiliary with quick release | Standard                           |                     |
| Main hydraulics                                    | l/min                              | 103                 |
| Pump                                               | l/min                              | 2 section gear pump |
| Loader controls                                    | Mechanical lever - loading pattern |                     |
| Hydraulic cycle times                              | Seconds                            |                     |
| Boom raise                                         | 9.9                                | 11.3                |
| Boom lower                                         | 7.9                                | 9.2                 |
| Extend                                             | 5.9                                | 14.7                |
| Retract                                            | 3.7                                | 19.7                |
| Bucket dump                                        | 3.4                                | 3.0                 |
| Bucket crowd                                       | 2.8                                | 2.4                 |
| External sight gauge.                              |                                    |                     |

| FEATURES                                           |   |   |
|----------------------------------------------------|---|---|
| CAB                                                |   |   |
| ROPS (Roll Over Protection System) - ISO 3471      | • | T |
| FOPS (Falling Object Protection System) - ISO 3449 | • |   |
| Fully glazed cabin                                 | • |   |
| Vinyl easy clean seat                              | • |   |
| Adjustable seat belt                               | • |   |
| Split door with latch back                         | • |   |
| Roof & screen sun blinds                           | • |   |
| Face fan                                           | • |   |
| 12v charging socket                                | • |   |
| CARRIAGE / TOOL CARRIER                            |   |   |
| JCB Q-Fit - with integrated forks                  | • |   |
| TELEMATICS - JCB LIVELINK                          |   |   |
| Machine hours                                      | • |   |
| Location positioning / movements                   | • |   |
| Diagnostic / service alerts                        | • |   |
| Geofencing                                         | • |   |

| INSTRUMENTS                              |   |
|------------------------------------------|---|
| Engine speed                             | • |
| Engine hours                             | • |
| Water temperature                        | • |
| Load Moment Indicator (LMI) + Inclinator | • |

| ACCESSORIES               |   |
|---------------------------|---|
| Lockable toolboxes        | • |
| Fire extinguisher         | • |
| Road lights               | • |
| Front cab work lights     | • |
| Rear cab work lights      | • |
| Recovery hitch            | • |
| Hydraulic level indicator | • |

| ATTACHMENTS                            |   |
|----------------------------------------|---|
| Floating forks and bar (Q-Fit mounted) | + |
| General purpose bucket with toe plate  | + |
| Grain shovel                           | + |
| Crane hook (fork mounted)              | + |
| Multishovel                            | + |
| Round bale clamp                       | + |
| Shear grab                             | + |
| Power grab                             | + |
| Industrial fork                        | + |
| Grain pusher                           | + |
| Bucket brush                           | + |
| Agricultural shovel                    | + |

|          |   |
|----------|---|
| STANDARD | • |
| OPTIONAL | + |





**ONE COMPANY, OVER 300 MACHINES.**

Your nearest JCB dealer

### **JCB LOADALL 530-70 / 530-110**

Lift capacity: 3000kg Gross power: 56kW (76hp) Lift height: 7-11m

JCB Sales Limited, Rocester, Staffordshire, United Kingdom ST14 5JP.

Tel: +44 (0)1889 590312 Email: [salesinfo@jcb.com](mailto:salesinfo@jcb.com)

Download the very latest information on this product range at: [www.jcb.com](http://www.jcb.com)

©2022 JCB Sales. All rights reserved. No part of this publication may be reproduced, stored in a retrieval system, or transmitted in any form or by any other means, electronic, mechanical, photocopying or otherwise, without prior permission from JCB Sales. All references in this publication to operating weights, sizes, capacities and other performance measurements are provided for guidance only and may vary dependant upon the exact specification of machine. They should not therefore be relied upon in relation to suitability for a particular application. Guidance and advice should always be sought from your JCB Dealer. JCB reserves the right to change specifications without notice. Illustrations and specifications shown may include optional equipment and accessories. All images are correct at time of print. The JCB logo is a registered trademark of J.C. Bamford Excavators Ltd.

